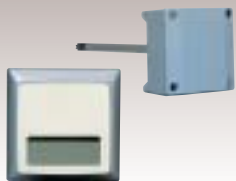


3

SENSORS

RHS301/302



- **Name** RH and Temperature Detectors
 - **Range** 0 to 100%RH, -20 to +80°C
 - **Element** Polymer/Pt100Ω
- Page ▶ 3-2

RT70



- **Name** Temperature Detector
 - **Range** -20 to +300°C
 - **Output** T/C (K), voltage linear
- Page ▶ 3-3

RT300/320



- **Name** Temperature Detectors
 - **Range** -40 to +3000°C
 - **Element** Infrared sensor
- Page ▶ 3-4

SPS40E



- **Name** Pressure Sensor
 - **Range** 0 to 3500kPa
 - **Output** 4 to 20mAdc
- Page ▶ 3-6

SES60



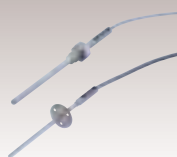
- **Name** Earthquake Sensor
 - **Range** ±2000Gal
 - **Sampling cycle** 10ms
- Page ▶ 3-7

SPS300A/B



- **Name** Pressure Detectors
 - **Range** -100 to +3500kPa
 - **Output** 4 to 20mA, relay contact
- Page ▶ 3-8

T Line Series



- **Name** Temperature Sensors
 - **TA/TB** RTD
 - **TC/TD/TE/TF** Thermocouple
- Page ▶ 3-9

SPC621A/B



- **Name** Temperature Detectors
 - **Range** 20 to 350°C
 - **Element** JIS Pt100Ω, JPt100Ω
- Page ▶ 3-13