

5

MASS FLOW PRODUCTS

CMS9500/0002/0005/0020/0050/0200/0500



- **Name** Gas Mass Flow Meters
- **Range** 0 to 500L/min (standard)
- **Output** 0 to 5Vdc

Page ▶ 5-2

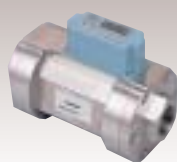
CMS0010/0050/0200/0500/1000/2000



- **Name** Gas Mass Flow Meters
- **Range** 0 to 2000L/min (standard)
- **Output** 0 to 5Vdc

Page ▶ 5-4

CMS1500



- **Name** Gas Mass Flow Meter
- **Range** 0 to 1500L/min (standard)
- **Output** 4 to 20mA

Page ▶ 5-6

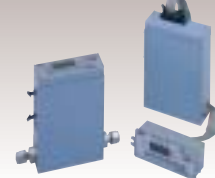
MCS100



- **Name** Mass Flow Sensor
- **Range** -3 to +3L/min
- **Output** 1 to 5Vdc

Page ▶ 5-7

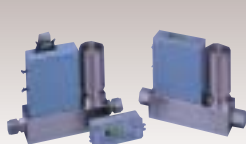
CMQ9200/9500/0002/0005/0020/0050



- **Name** Mass Flow Controllers
- **Range** 0 to 50L/min (standard)
- **Output** 0 to 5Vdc/1 to 5Vdc

Page ▶ 5-8

CMQ0050J/K, CMQ0200J/K, CMQ0500J/K



- **Name** Mass Flow Controllers
- **Range** 0.4 to 500L/min (standard)
- **Output** 0 to 5Vdc/1 to 5Vdc

Page ▶ 5-10

CMQ9500/0005/0050/0200/0500/1000



- **Name** Mass Flow Controllers (Hz/He)
- **Range** 0 to 500L/min (standard)
- **Output** 0 to 5Vdc/1 to 5Vdc

Page ▶ 5-12

CML



- **Name** Gas Vortex Flow Meter
- **Range** 0 to 1600m³/h (normal)
- **Pressure** 1.0Mpa max

Page ▶ 5-14

CMG150/250/400/500 (for Natural Gas or Air)



- **Name** Gas Flow Monitors
- **Gas** City gas, air
- **Range** 0.5 to 150m³/h (normal)

Page ▶ 5-16

CMG150/250/400/500 (for Butane or Propane)



- **Name** Gas Flow Monitors
- **Gas** Butane, Propane
- **Range** 0.1 to 50.0m³/h (normal)

Page ▶ 5-17