

6

FLAME SAFEGUARD(F.S.G) CONTROLS

C7012A/E



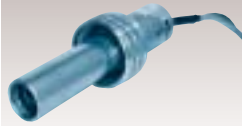
- Name Flame Detectors
 - Used with R4332, RA890F, etc.
 - Fuel Gas, oil, mixed
- Page **▶ 6-2**

C7012C/F



- Name Flame Detectors
 - Used with R4332, RA890F, etc.
 - Fuel Gas, oil, mixed
- Page **▶ 6-3**

C7035A



- Name Flame Detector
 - Used with RA890, R4780C, etc.
 - Fuel Gas, oil, mixed
- Page **▶ 6-4**

C7015A



- Name Flame Detector
 - Used with Protectorelay + R7258A
 - Fuel Gas, oil, mixed
- Page **▶ 6-5**

C7076A



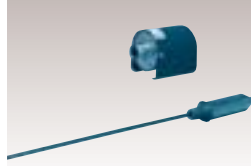
- Name Flame Detector
 - Used with R4332, etc.
 - Fuel Gas, oil, mixed
- Page **▶ 6-6**

C7076D



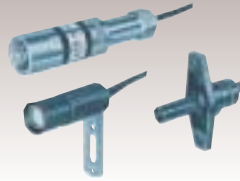
- Name Flame Detector
 - Used for R4332 etc.
 - Fuel Gas, oil, mixed
- Page **▶ 6-7**

C7007A, C7008A



- Name Flame Rods
 - Used with RA890F, R4715, etc.
 - Fuel Gas
- Page **▶ 6-8**

C554A, C572A, CN700



- Name Flame Detectors (Cds)
 - Used for R4424, R4780, etc.
 - Fuel Oil
- Page **▶ 6-9**

RA890F/G



- Name Protectorelay
 - Used for Batch processing
 - Fuel Gas, oil, mixed
- Page **▶ 6-10**

FRS100



- Name Flame Relay
 - Used for Batch processing
 - Fuel Gas, oil, mixed
- Page **▶ 6-11**

FRS110



- Name FSG Relay
 - Used for Batch processing
 - Fuel Gas, oil, mixed
- Page **▶ 6-12**

FRS60



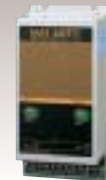
- Name Flame Relay
 - Used for FRS100
 - Indication Flame voltage monitoring
- Page **▶ 6-13**

R4332A



- Name Protectorelay
 - Used for Batch/continuous
 - Fuel Gas, oil, mixed
- Page **▶ 6-14**

R4332B



- Name Protectorelay
 - Used for Batch/continuous
 - Fuel Gas, oil, mixed
- Page **▶ 6-15**

R4440H



- Name Protectorelay
 - Used for Batch processing
 - Fuel Oil
- Page **▶ 6-16**

R4424C/D/E



- Name Protectorelay
 - Used for Batch processing
 - Fuel Oil
- Page **▶ 6-17**

R4715B/C



- Name Protectorelay
 - Used for Batch processing
 - Fuel Gas
- Page **▶ 6-18**

R4750B/C



- Name Protectorelay
 - Used for Batch processing
 - Fuel Gas
- Page **▶ 6-19**

R4780B/C/D



- Name Protectorelay
 - Used for Batch processing
 - Fuel Gas, oil, mixed
- Page **▶ 6-20**

S720A



- Name Solid State Spark Generator
 - Used for Oil/gas burners
 - Power 100/200Vac
- Page **▶ 6-21**

S7200A



- Name Solid State Spark Generator
 - Used for Oil/gas burners
 - Power 100/200Vac
- Page **▶ 6-22**

ATN110A-1



- Name Ignition transformer
 - Used for Burners ignition
 - Power 100/200Vac
- Page **▶ 6-23**

T675A



- Name Temperature Controller
 - Range -15 to +125°C
 - Output SPDT contact
- Page **▶ 6-24**

APN4712



- Name Flame Current Indicator
 - Alarm Hi/Lo limit alarms
 - Power 100/110Vac, 200/220Vac
- Page **▶ 6-25**

VGA10



- Name Gas Solenoid Valve
 - Operation Direct
 - Gas City, Natural, LPG
- Page **▶ 6-26**

VEN4000B

- **Name** Gas Solenoid Valve
 - **Operation** Quick-opening
 - **Gas** City, Natural, LPG
- Page **▶ 6-27**

VEN4000C

- **Name** Gas Solenoid Valve
 - **Operation** Slow-opening
 - **Gas** City, Natural, LPG
- Page **▶ 6-28**

V4055A, V5055A

- **Name** Valve Actuator, Gas Valve
 - **Operation** ON/OFF
 - **Gas** City, Natural, LPG
- Page **▶ 6-29**

MC150-JY

- **Name** Water Level Controller
 - **Pressure** 1830kPa max.
 - **Control** Pump (SPST), water (SPDT)
- Page **▶ 6-30**

CCM21, CCV20

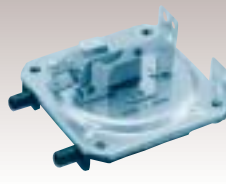
- **Name** Control Motor and Valve
 - **Operation** Proportional, ON/OFF
 - **Gas** City, Natural, LPG
- Page **▶ 6-31**

MD603A

- **Name** Damper Motor
 - **Operation** Hi-Lo 2-position
 - **Rotation** 0 to 90°
- Page **▶ 6-32**

C6097A

- **Name** Pressure Switch
 - **Range** 0.1 to 50kPa
 - **Output** SPDT contact
- Page **▶ 6-33**

C6065

- **Name** Pressure Switch
 - **Gas** Air
 - **Output** SPDT/SPST contact
- Page **▶ 6-34**

L404F

- **Name** Pressure Controller
 - **Range** 0 to 2000kPa
 - **Output** SPDT/SPST contact
- Page **▶ 6-35**

L91B/D

- **Name** Pressure Controller
 - **Range** 0 to 2000kPa
 - **Output** 0 to 135Ω potentiometer
- Page **▶ 6-36**

FS1-J

- **Name** Flow Switch
 - **Fluid** Water
 - **Output** SPDT contact
- Page **▶ 6-37**

FS1-W

- **Name** Flow Switch
 - **Fluid** Water
 - **Output** SPDT contact
- Page **▶ 6-38**

FS4-3J

- **Name** Flow Switch
 - **Fluid** Water
 - **Output** SPDT contact
- Page **▶ 6-39**

FS7-4

- **Name** Flow Switches
 - **Fluid** Water
 - **Output** SPDT contact
- Page **▶ 6-40**

FS8-WJ

- **Name** Flow Switch
 - **Fluid** Water
 - **Output** SPDT contact
- Page **▶ 6-42**